

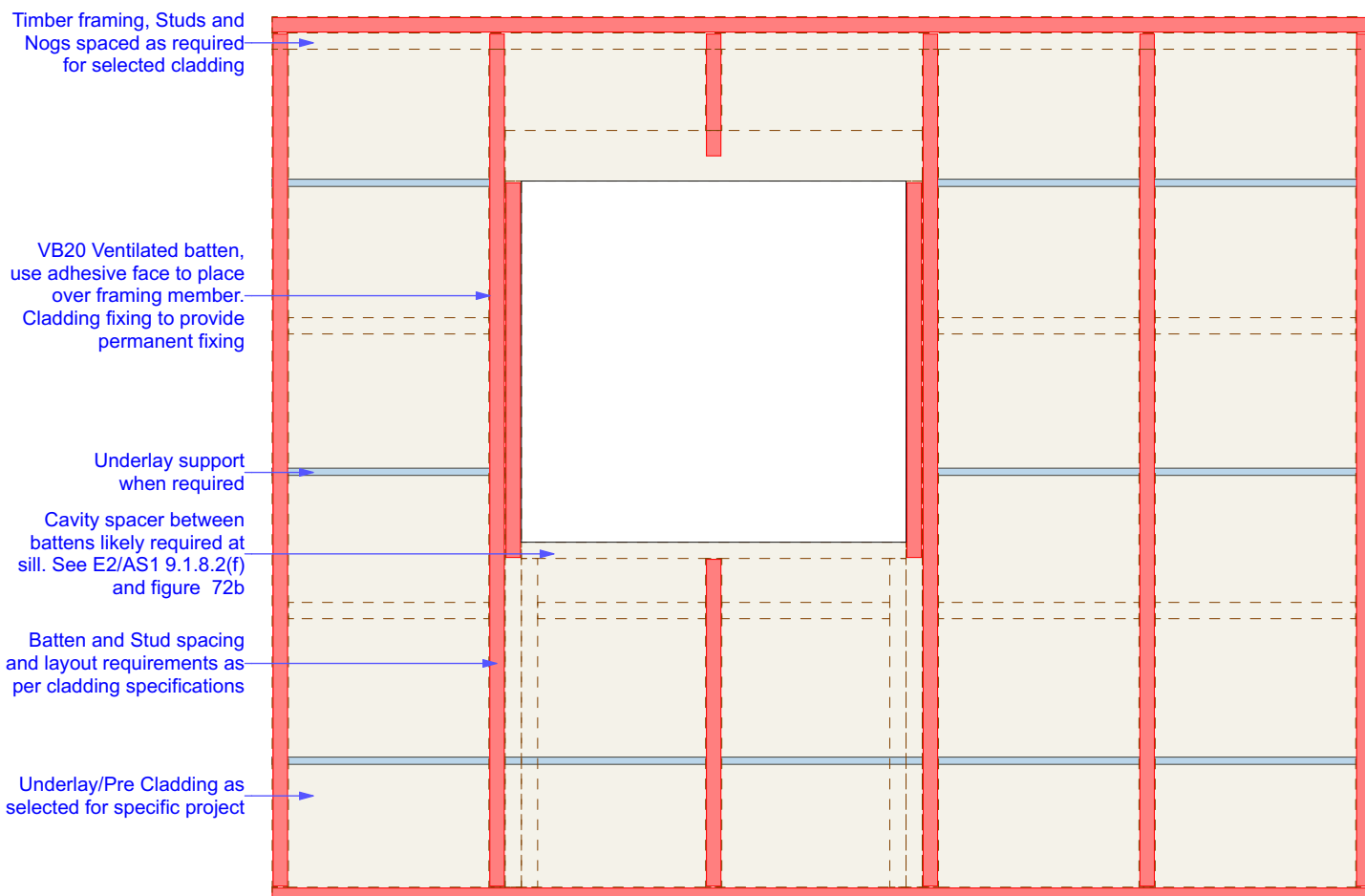
THIS IS A SUGGESTED METHOD OF VENTILATION BUT THE OVERALL DESIGN AND DIMENSIONS ARE THE RESPONSABILITY OF THE DESIGNER IN COMPLIANCE WITH THE NZ BUILDING CODE.

Figure 01
VB20 - Vented Batten
Scale 1:2, 1:5

Contact

63 Hull Road, Mount Maunganui
 Tauranga
 07 574 1116
 info@vent.nz





VB20 Ventilated Batten
Horizontal Cladding layout

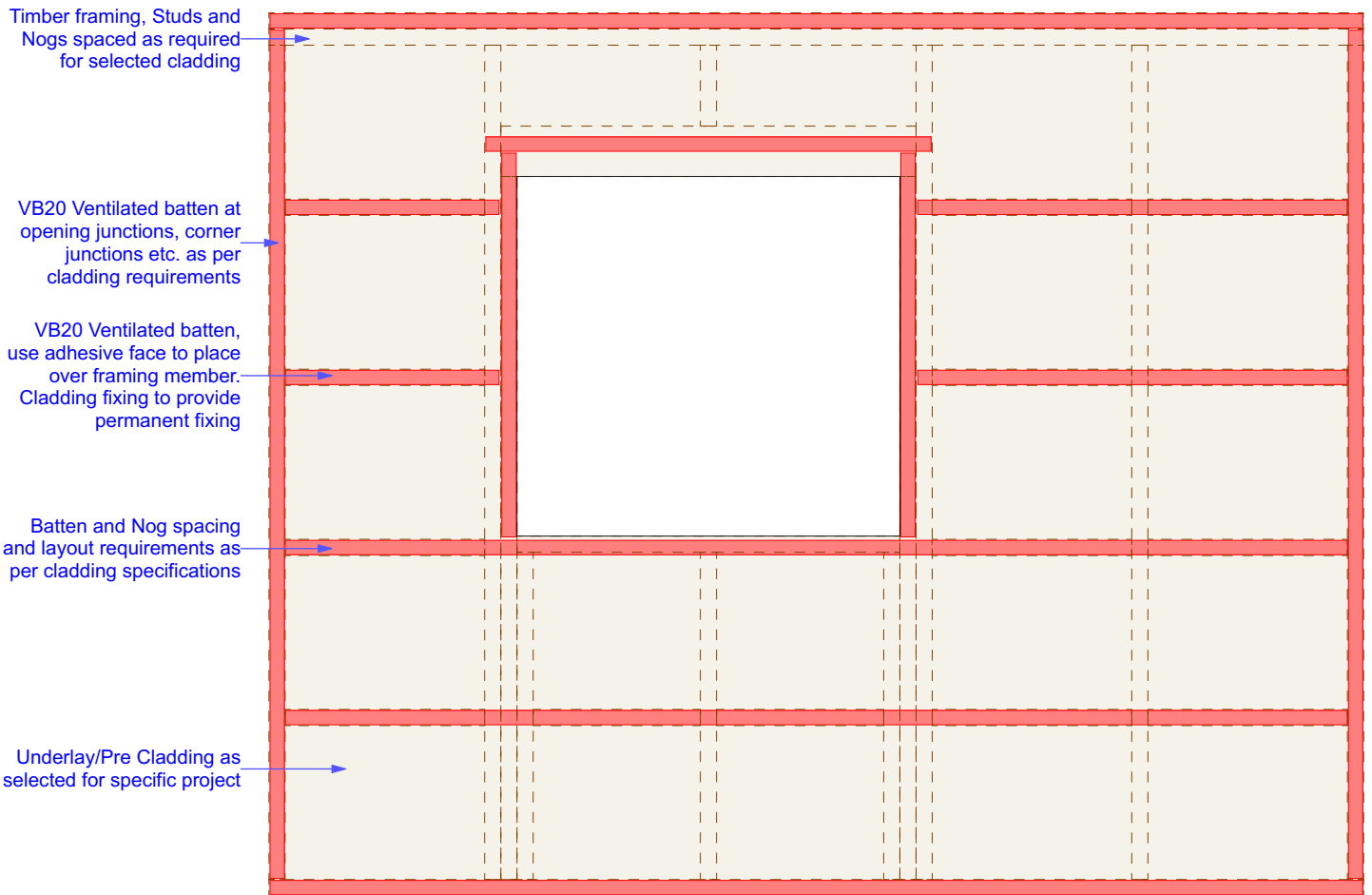
THIS IS A SUGGESTED METHOD OF VENTILATION BUT THE OVERALL DESIGN AND DIMENSIONS ARE THE RESPONSABILITY OF THE DESIGNER IN COMPLIANCE WITH THE NZ BUILDING CODE.

Figure 02
Batten Setout - Horizontal Cladding Layout
VB20 - Vented Batten
Scale 1:20

Contact

63 Hull Road, Mount Maunganui
Tauranga
07 574 1116
info@vent.nz





VB20 Ventilated Batten
Vertical Cladding layout

THIS IS A SUGGESTED METHOD OF VENTILATION BUT THE OVERALL DESIGN AND DIMENSIONS ARE THE RESPONSABILITY OF THE DESIGNER IN COMPLIANCE WITH THE NZ BUILDING CODE.

Figure 04
Batten Setout - Vertical Cladding Layout
VB20 - Vented Batten
Scale 1:20

Contact

63 Hull Road, Mount Maunganui
Tauranga
07 574 1116
info@vent.nz

